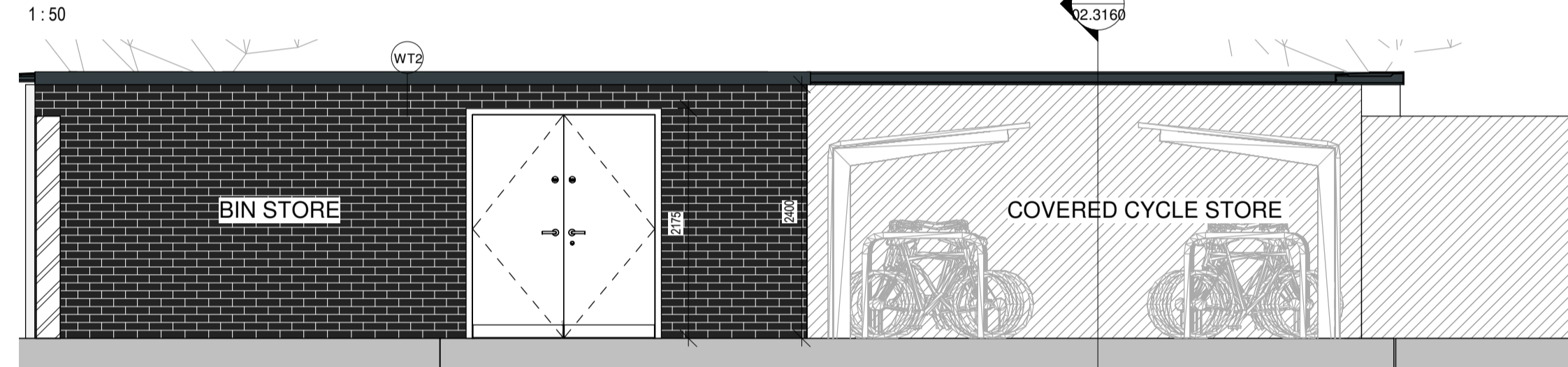
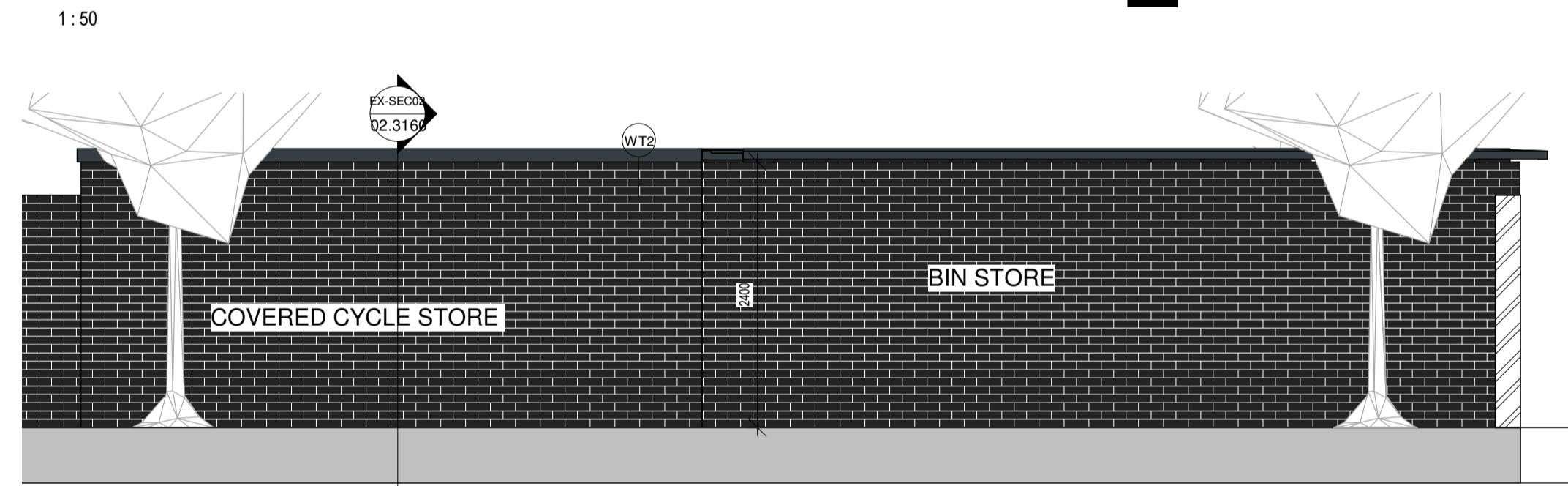


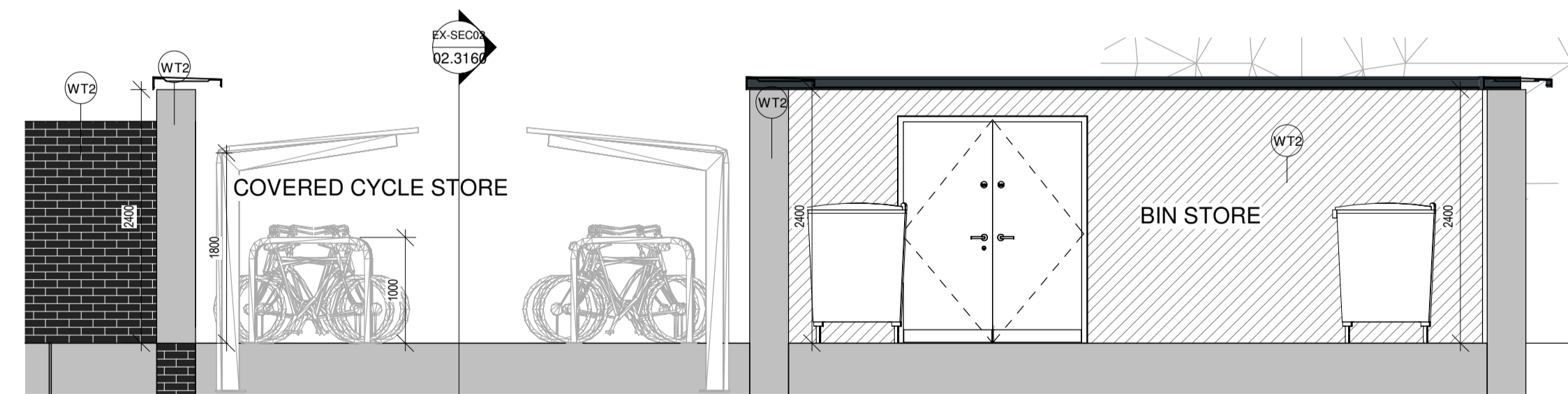
EX-GAP01 Bin Store & Covered Cycle Store Plan



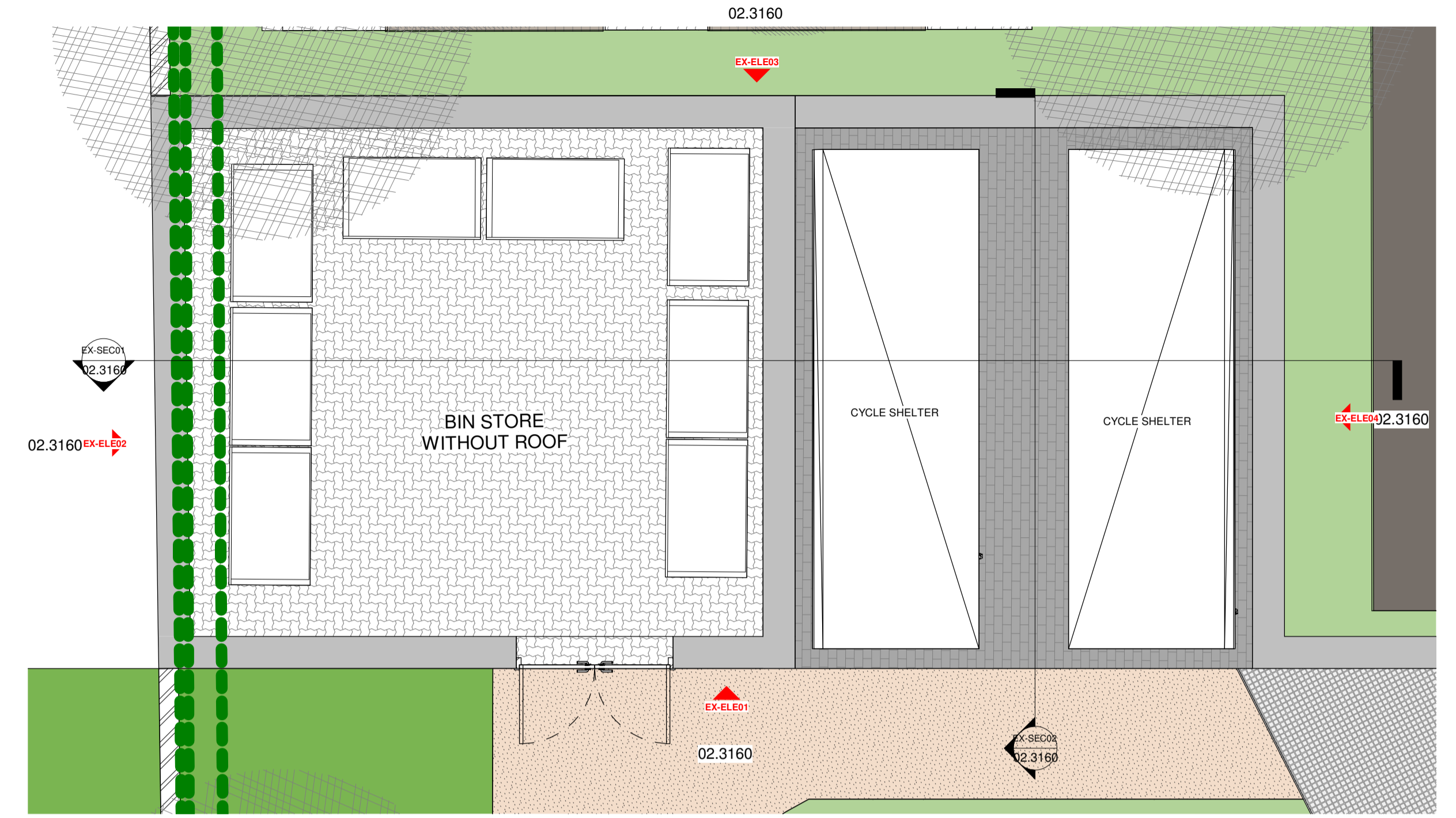
EX-ELE01 Bin Store & Covered Cycle Store Elevation 01



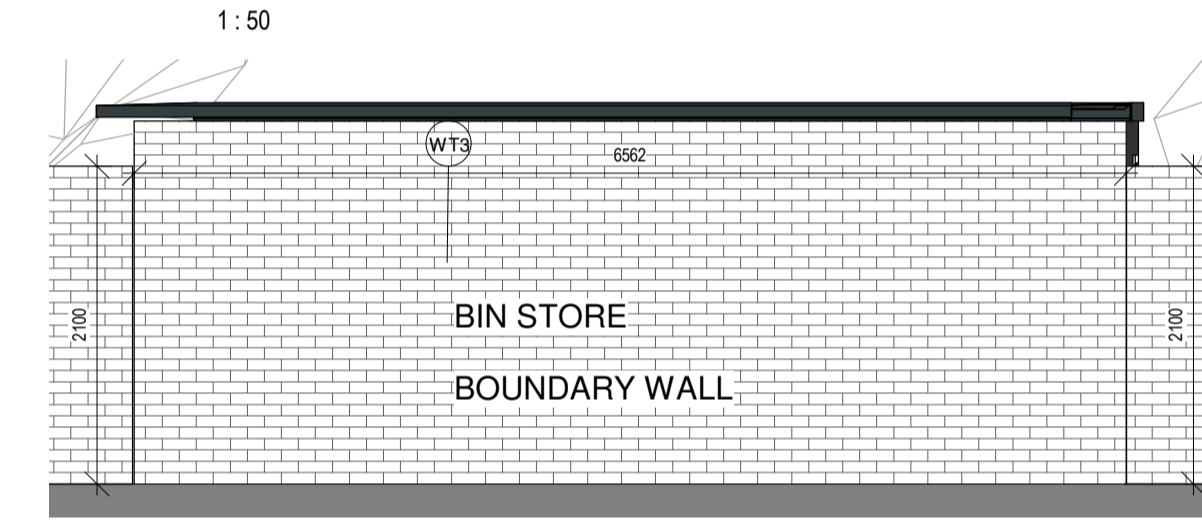
EX-ELE03 Bin Store & Covered Cycle Store Elevation 02



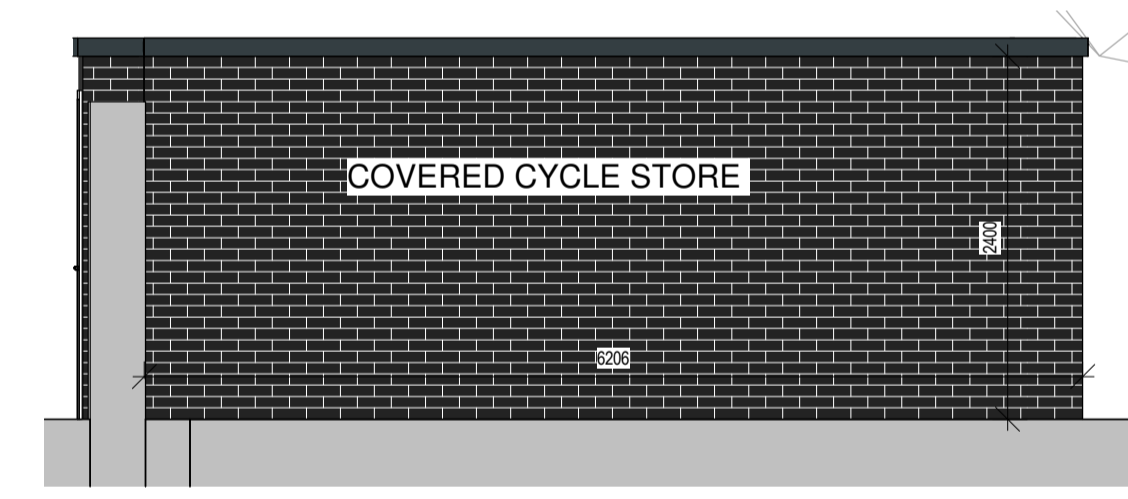
EX-SEC01 Bin Store & Covered Cycle Store Section 01



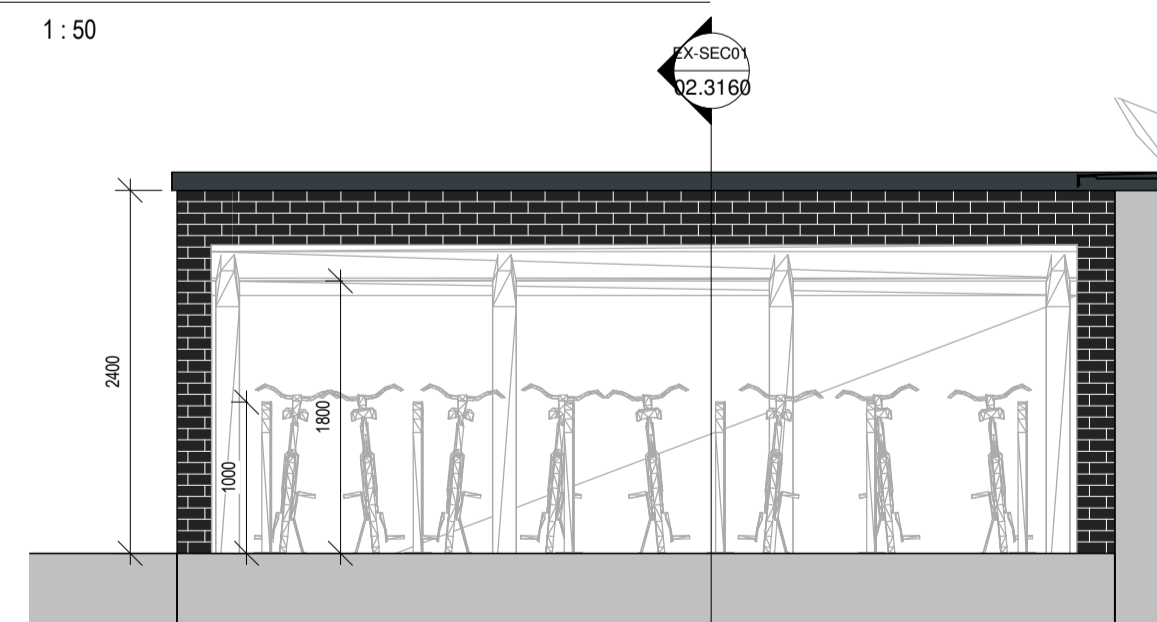
EX-GAP02 Bin Store & Covered Cycle Store Roof Plan



EX-ELE02 Bin Store & Covered Cycle Store Elevation 03



EX-ELE04 Bin Store & Covered Cycle Store Elevation 04



EX-SEC02 Bin Store & Covered Cycle Store Section 02

Notes:

- Do not scale from this drawing. Use figured dimensions in all cases.
- Verify dimensions on site and report any discrepancies to the Architect immediately.
- This drawing is to be read in conjunction with the Architect's Specification.
- © This drawing is copyright and may only be reproduced with the Architect's permission.

Drawing Notes:

Refer to windows, doors and curtain walling schedules for more information on details and types. Refer to all other referenced architectural drawings for more information.

Refer also to all other consultants drawings, specifications, reports and schedules including: Walsh Goodflow for structural and civils, Renaissance for MEP information, JGA for fire strategy information, Ryan & Associates for DAC information, ATT Urbanism & Landscape for landscape plan boundary details & Amplitude Acoustics for Acoustics.

Walls

Selected clay bricks to varying colours as defined in the different character areas as indicated, painted nap sand cement render, exposed plaster bands around external opens / lintels. Concrete or metal cills, lintels or cappings as indicated on elevations.

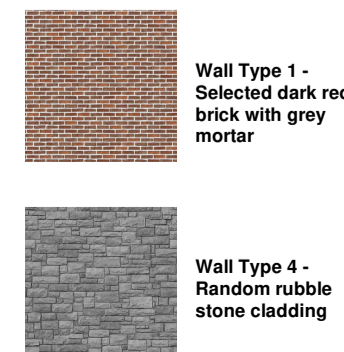
- 1 Facing Brick 1 - Red / Brown Blend with flush grey mortar
- 2 Facing Brick 2 - Grey brick with recessed dark grey mortar
- 3 Facing Brick 3 - Light Buff brick with recessed grey mortar
- 4 Random rubble stone cladding
- 5 Sand / cement nap finish to external leaf of blockwork, paint then applied.

Windows

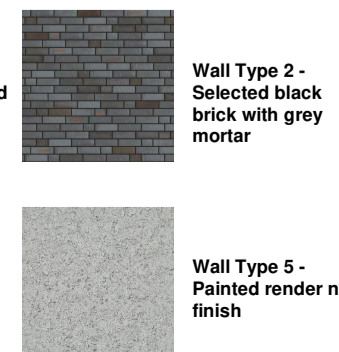
6 Windows to be Rational Auro Alu-clad triple glazed windows. External doors to be high security impact resistant timber half doors to EN 1627 and level access threshold to approved colour. Obscure windows to bathrooms and where overlooking adjoining amenity spaces as indicated on elevation drawings.

Roof

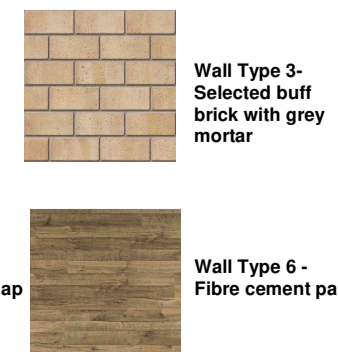
- 7 Bulbouse flat concrete roof tiles, fixed to timber battens on vapour permeable roofing underlay on timber / steel roof structure to a suitable roof pitch manufactured in compliance with E.N. 490: 2005.
- 8 Low pitch roofs or canopies to be either Single ply membrane Tropic type membranes or select pressed metal roofing with standing seams.
- 9 Rainwater goods, downpipes etc. to be Aluminium Alloy.
- 10 Balustrades to be painted mild steel uprights.



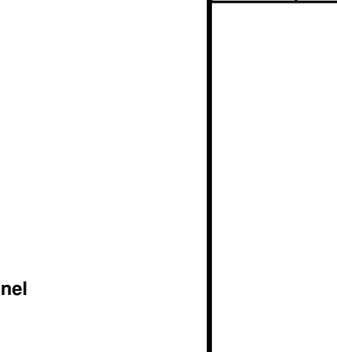
Wall Type 1 - Selected dark red brick with grey mortar



Wall Type 2 - Selected black brick with grey mortar



Wall Type 3 - Selected buff brick with grey mortar



Wall Type 4 - Random rubble stone cladding



Wall Type 5 - Painted render nap finish



Wall Type 6 - Fibre cement panel

Issues & Revisions			
Rev.	Date	Drawn	Details of Issue / Revision
A	AUG 21	A.R.	Issue for Planning



Client Details:
Voyage Property Limited,
Ashbourne Hall,
Dock Road,
Limerick.

Project Details:
Greenpark SHD
Limerick

Drawing Title: Apartment Bin Store & Covered Cycle Store Drawings - APARTMENT C			
Job No. P20-133D	Sheet Size: A1	Scale @A1: 1:50	
Issue Date: AUG 21	Drawn By: A.Navarro	Reviewed By: M.Freaney	
Status: S02	Purpose of Issue: 3.0 Planning Application		
Project-Originator-Zone-Level-Type-Role-Classification-Number: 20133-RAU-ZZ-ZZ-DR-A-02.3160			Revision: A